

A WIN - WIN Partnership



Production for Improved Nutrition



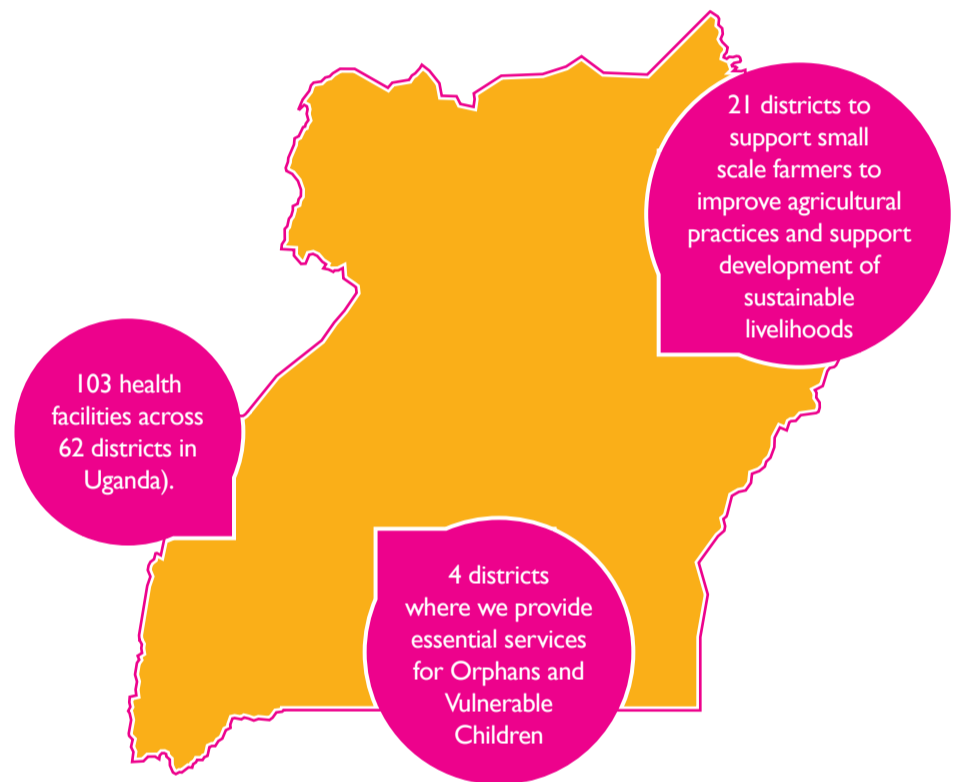
USAID
FROM THE AMERICAN PEOPLE



RECO INDUSTRIES LTD

A SNAPSHOT: OUR 5 COMMITMENTS

- Increase local production of therapeutic and supplementary foods for children, pregnant women, breastfeeding mothers, and people living with HIV/AIDS with moderate or severe acute malnutrition.
- Strengthen the supply and distribution system for therapeutic and supplementary foods within public and private sectors in Uganda.
- Improve household incomes of small scale farmers through livelihoods improvement.
- Expand access to essential services for orphans and vulnerable children and their caregivers.
- Collaborate with public and private actors, learn from our experiences and adapt to sustainable methods for the reduction of malnutrition.



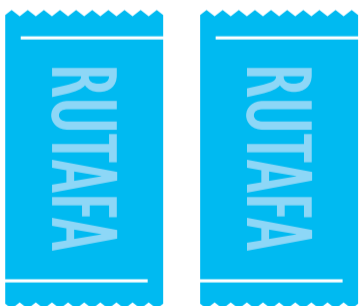
RECO INDUSTRIES LTD



CONTACTS

Plot 3 KAR drive, Kololo, Kampala | Tel: +256 414 259 380 | +256 414 259 530
Email: info@pin.reco-industries.com http://pin.reco-industries.com

OUR FIRST YEAR: IMPACT IN NUMBERS



X2

Doubled RUTF production from 600,000 kg to 1,500,000kg

Livelihoods and Agriculture

1,317 farmers trained
13,630 others

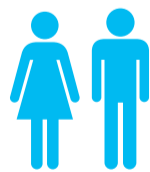
1,317 lead farmers have trained 13,630 farmers in improved agricultural skills

3,465 households established kitchen gardens

40,280 farmers reached with modern agriculture techniques



347,715
Kgs Distributed



18,387
Clients Treated



118
Health Workers Trained

Supply Chain

347,715kg of RUTF produced and distributed or outpatient treatment of severe malnutrition

18,387 clients received RUTF under our nutrition initiative in 104 health facilities

118 health workers and stores persons trained in basic handling and reporting for RUTF and FBF

Essential services for OVC

536 OVC empowered with health and nutrition information

388 OVC given psychosocial Support

375 Children supported to access protection services

19 Community Resource Persons and 3 Agriculture Field Officers trained in OVC programming

Over 2000 OVCs enrolled under project in partnership with the community using the Vulnerability index and Child status index.



2000 OVCs from
467 Households





The Malnutrition Problem

In Uganda malnutrition is a consequence of limited or inadequate preventive and/or corrective actions. Almost half of the population is food energy deficient with malnutrition being a leading contributor to child deaths and illnesses. Problems of education, access, quality, supply chain and affordability have weakened efforts to treat malnutrition. This is where we start, providing holistic solutions that empower communities address malnutrition sustainably.

For 30 years, RECO industries, an agro based manufacturer has been producing quality foods for the Ugandan market. In 2013 we started an innovative partnership under the USAID/Uganda Production for Improved Nutrition project' with a mission to reduce under nutrition in Uganda. Through this partnership we are producing Ready to Use Therapeutic food(RUTAFAs) and Fortified Blended foods with ingredients sourced from local farmers to treat malnutrition.

Built on private sector efficiencies in line with national strategies our interventions span the entire value chain, starting with skill strengthening of the farmers who provide raw materials for the products; operating a reliable supply chain to ensure that these treatments for malnutrition are consistently accessible and professionally administered in health facilities. Along the way we are learning from our experience, leveraging resources and expertise with other players, problem solving and adapting the design of interventions to maximize and sustain impact.

HOW WE ARE HELPING REDUCE MALNUTRITION - The value chain



BUILDING CAPACITY OF LOCAL FARMERS AND INCREASE ACCESS TO STRATEGIC MARKETS

1. **EQUIP:** Build the capacity of lead farmers to support local farmers in modern agronomic practices for the production of nutrient rich foods in kitchen gardens for home consumption and additional produce for sell to strategic markets including RECO industries.
2. **ENTERPRISE:** Producer Organizations (POs) which are market driven farmer groups, are supported to form cooperative enterprises to better connect farmers to trade opportunities.
3. **EXPERTISE:** Partnerships with experts, both in the private sector and local government specialists at the district level ensure that farmers optimally leverage opportunities .

ESTABLISHING A RELIABLE SUPPLY CHAIN

1. We are increasing the production of therapeutic and supplementary foods to supplement community based treatment of malnutrition.
2. We ensure adequate and timely supply of RUTF and FBFs to participating health facilities.

AVAILABILITY OF NUTRITION SUPPLEMENTS AT HEALTH FACILITIES

1. We partner with accredited health centers to identify community nutrition needs.
2. Following Ministry of Health guidelines and the needs assessment, we train the health workers in logistics management, handling, storing and administering therapeutic foods(RUTAFAs) to treat malnutrition.
3. Support supervision is provided for quality assurance across the distribution chain.

1

Helping reduce malnutrition - The Value Chain



2

Increasing access to essential services for OVC



3

Public private partnership to maximize results



INCREASING ACCESS TO ESSENTIAL SERVICES FOR OVC

We are empowering Orphans and Vulnerable children and their families to sustainably improve their nutrition, health, education and access additional community based social services for overall wellbeing. Using a Vulnerability Index and Child Status Index we work with communities to identify the children with the greatest need. We are working with community resource persons and agricultural field officers to reach vulnerable children and their household in Ibanda, Kamwenge, Kasese, and Kibaale districts.

PUBLIC PRIVATE PARTNERSHIP TO MAXIMIZE RESULTS

Nutrition and its effective management is cross cutting and diverse. Collaborating with other key actors and learning from our collective experiences is driving our progress. By working with public and private partners we are leveraging resources and maximizing comprehensive service delivery to improve nutrition and overall wellbeing. Key technical partners include the Ministry of Health; NUTRISSET (Food Production and Quality Control support); University Research Co., LLC (URC) Food security and livelihoods, project management and technical assistance and district leadership and community nutrition support persons.

